



The Rotations

March 13, 2013

SANTA ANA NORTH ROTARY 1959

WWW.SANTAANANORTHROTARY.ORG

RYLA

PRESIDENT'S REMARKS

Today, Jacqueline Savidan, Club Outreach Chair, talked to us about RYLA's mission, history of RYLA and requirements to be a volunteer. Our guest, Eric Escobar, also shared his personal story and the life-changing experience at RYLA in 2006.

GUESTS

Lisa Wright Jenkins
Eric Escobar

RECOGNITION

Mel – Club Anniversary
Penny – Club Anniversary

CLUB ANNOUNCEMENTS

Foundation (Bruce)

Will be sending in check.

Community Service (Lisa)

Organized a Water Bottle Drop for Water for South Sudan Project – Thank you Patrick and Alfredo for picking up and delivering the free water for the Century HS Interact Fundraiser.
Literacy Fair – Thank you Patrick and

Jeff for volunteering on March 9.

Reminder: Literacy Month and collecting all new and gently used children's book. Check out yard sales and stores. Bring books to Rotary Meeting. Drive ends April 3.

New Generations (David)

Vocal competition will be next week @ Elks Lodge in Santa Ana. Starts 12 and lunch will be provided. **Club 49** - Received positive feedback from club members to pursue.

Fundraiser (David)

David, Mel, and Lisa M toured Think Together elementary site in Tustin on Thursday, March 7, to see first-hand the mission and how it's impacting children's lives K-5. Afterwards, we met with Nadia Flores and Tim Shaw, Chief Development Officer, of Think Together and discussed commitment, goals, venue, and potential dates. Another meeting is scheduled for THU, March 21 to work on recommendation.



Wednesdays 12:15 PM

Antonello Ristorante
3800 S Plaza Drive, Santa Ana, CA

UPCOMING SPEAKERS

March 20 - Vocal Competition – Elks Lodge @ 212 Elk Ln Santa Ana

UPCOMING EVENTS

March 13 – Board meeting 1:30 pm

March 19 – RYLA Applications Due

March – Children's Book Drive Month

April 25 – District 5320 Celebration – RSVP deadline

May 2-4 – District 5320 Celebration @ Knott's Berry Farm.

May 11 – Blind Children's Learning Center Walk for Independence, 7:30am – 12pm

May 11 - Club 49 Scholarship Fundraising Event, 6pm – 11pm.

Program

Speaker: Jacqueline Savidan

How can our children save the environment if they never experience it?

About RYLA

Rotary Youth Leadership Awards (RYLA) is Rotary's leadership training program for young people. RYLA participants can be ages 14-30, but most clubs and districts choose to focus on a narrower age range, such as 14-18 or 19-30. The first RYLA-like event was held in Queensland Australia in 1959

RYLA emphasizes leadership, citizenship, and personal growth, and aims to

- Demonstrate Rotary's respect and concern for youth
- Provide an effective training experience for selected youth and potential leaders
- Encourage leadership of youth by youth
- Recognize publicly young people who are rendering service to their communities

District 5320 RYLA

In 1994, District 5320 revitalized the RYLA program. In 1996, they hired Boojum Institute for Camp and in 2004 the high ropes courses was added, which really turned the program up a notch. Today, District 5320 sends 180 High School Juniors from all over the District to attend this weekend leadership camp in April. It's staffed with 70 staff, Rotary volunteers and has raised \$1,000,000.

Please visit the District 5320 website for even more information about the program, application, and testimonials:

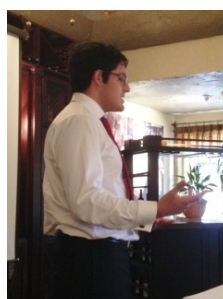
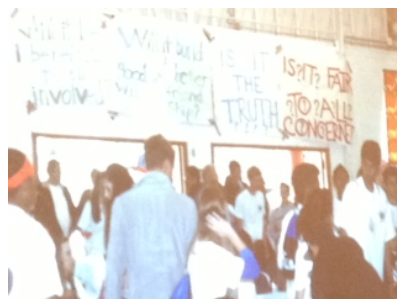
<http://ryla5320.org/rotarian-forms/ryla-club-guidelines>.

Calling all Rotarians

There's a need for Rotary volunteers to be "moms/dads" for the kids. There's a mandatory application and meeting March 16 and 30 at the Boy Scouts Building in Santa Ana. Interested parties should register. The weekend is not physically intensive and we want diversity. Don't just let the same old people experience this life-changing weekend.

Application Process

It's important to think beyond just Interact Clubs and the "good kids" that might already be leaders. RYLA is looking to develop and does not shy away from working with kids that could really benefit for this camp. So think big! Applications are due APRIL 1 to make sure the camp has time to organize the kids into groups or families. If you have more applicants than spots, please contact RYLA as many Clubs don't always fill and cancel their spots before April 1.



Eric Ecoibar – 2006 RYLA Camper